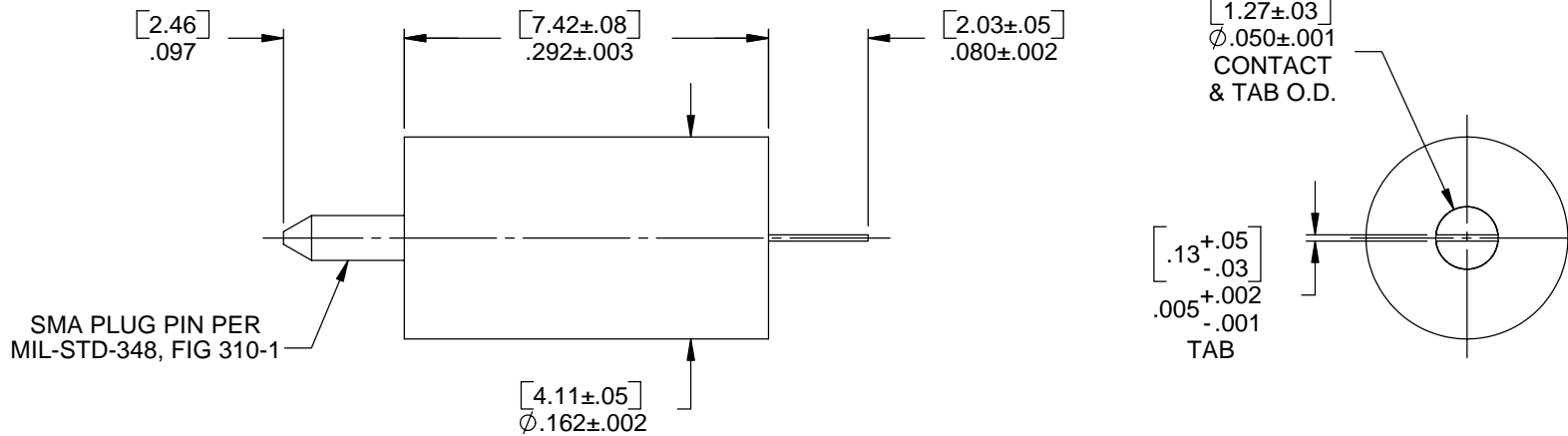
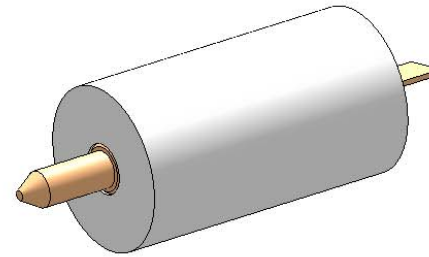


**MATERIAL/FINISH PROPERTIES**

MATERIAL PROPERTIES:  
 CONTACT: BERYLLIUM COPPER PER ASTM B196 OR EQUIVALENT  
 INSULATOR: PTFE PER ASTM D1710 OR EQUIVALENT

PLATING PROPERTIES:  
 CONTACT: .000030 MIN. GOLD PER MIL-G-45204 OVER  
 .000050 MIN. NICKEL PER QQ-N-290

CONNECTOR MEETS: RoHS 2002/95/EC STANDARDS



A	NPR 454	TLB	07/13/07
REV	DESCRIPTION	APPR	DATE

***Intelliconnect, Ltd.***  
*A New Type of Connector Company*

**UNLESS OTHERWISE SPECIFIED**  
 ALL DIMENSIONS ARE REFERENCE  
 X.XXX DIM'S = INCHES \* [X.XX] DIM'S = MILLIMETERS  
 SURFACE FINISH: 63 MICRO MAX.  
 ALL DIAMETERS TO BE CONCENTRIC WITHIN .005 F.I.M.

TITLE: SPECIAL CONTACT SUB ASSEMBLY			
MATERIAL & FINISH: PER TABLE ABOVE			
DRAWN BY: SRS	CHECK BY: PCS	APPR. BY: TLB	
DATE: 01/05/07	DATE: 01/05/07	DATE: 01/05/07	
DO NOT SCALE DRAWING	SCALE	SIZE	REV
	7:1	A	A
SALES DRAWING	PART NO.	SHEET	
	S1036G	1 OF 1	