

MATERIAL/FINISH PROPERTIES

MECHANICAL/ELECTRICAL PROPERTIES

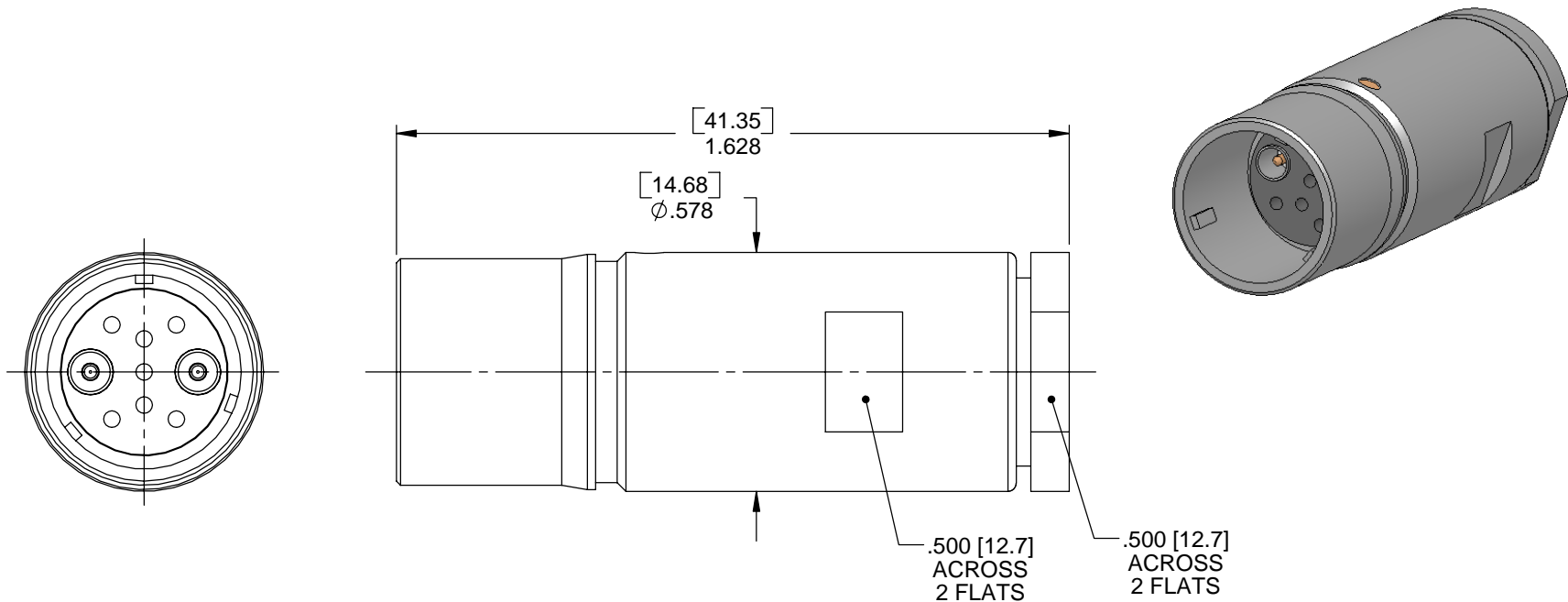
MATERIAL PROPERTIES:

OUTER SHELL: BRASS PER ASTM B16 OR EQUIVALENT
 CONTACT BODIES: BRASS PER ASTM B16 OR EQUIVALENT
 CONTACT CENTER PINS: BRASS PER ASTM B16 OR EQUIVALENT
 INSULATORS: DELRIN PER ASTM D4181; COLOR: BLACK

PLATING PROPERTIES:

OUTER SHELL: .000100 MIN. NICKEL PER QQ-N-290
 CONTACT BODIES: .000100 MIN. NICKEL PER QQ-N-290
 CONTACT CENTER PINS: .000030 MIN. GOLD PER MIL-G-45204 OVER
 .000050 MIN. NICKEL PER QQ-N-290

ASSEMBLY MEETS: RoHS 2002/95/EC STANDARDS
 CONNECTOR DURABILITY: 250 CYCLES MIN.
 CABLE: MICRODOT SPECIAL
 ASSEMBLY INSTRUCTIONS: AI283



Intelliconnect, Ltd.
A New Type of Connector Company

UNLESS OTHERWISE SPECIFIED

ALL DIMENSIONS ARE REFERENCE
 X.XXX DIM'S = INCHES * [X.XX] DIM'S = MILLIMETERS
 SURFACE FINISH: 63 MICRO MAX.
 ALL DIAMETERS TO BE CONCENTRIC WITHIN .005 F.I.M.

TITLE: SPECIAL TWIN-AX CABLE CLAMP JACK

MATERIAL & FINISH: PER TABLE ABOVE

DRAWN BY: SRS	CHECK BY: PCS	APPR. BY: TLB
DATE: 09/20/07	DATE: 09/20/07	DATE: 09/20/07

DO NOT SCALE DRAWING	SCALE 2.5:1	SIZE A	REV C
-----------------------------	-----------------------	------------------	-----------------

SALES DRAWING	PART NO. S1013N	SHEET 1 OF 1
----------------------	---------------------------	------------------------

C	ECN 1184	TLB	09/20/07
REV	DESCRIPTION	APPR	DATE