

**MATERIAL/FINISH PROPERTIES**

**MATERIAL PROPERTIES:**

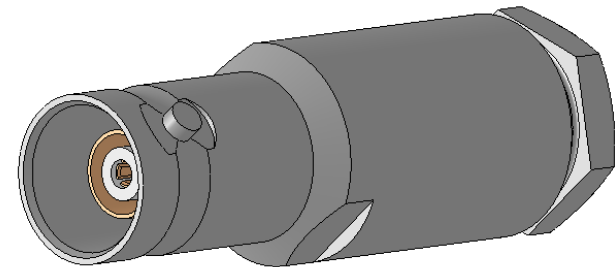
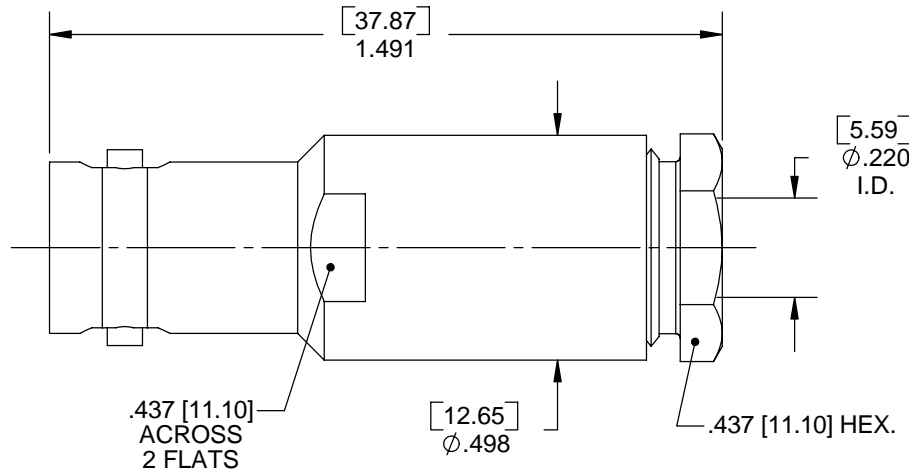
BODY: BRASS PER ASTM B16 OR EQUIVALENT  
 CONTACT: BERYLLIUM COPPER PER ASTM B196 OR EQUIVALENT  
 INSULATORS: PTFE PER ASTM D1710 OR EQUIVALENT  
 GASKET: SILICONE RUBBER PER ZZ-R-765 OR EQUIVALENT

**PLATING PROPERTIES:**

OTHER METAL PARTS: .000100 MIN. NICKEL PER QQ-N-290  
 CONTACTS: .000030 MIN. GOLD PER MIL-G-45204 OVER  
 .000050 MIN. NICKEL PER QQ-N-290

**MECHANICAL/ELECTRICAL PROPERTIES**

CONNECTOR MEETS: MIL-STD-348 FIG. 201-2, MIL-PRF-49142  
 CONNECTOR MEETS: RoHS 2002/95/EC STANDARDS  
 CONNECTOR DURABILITY: 500 CYCLES MIN.  
 CABLE: TRIAX, CABLE GROUP 18 PER ES102, COLOR: GREY  
 ASSEMBLY INSTRUCTIONS: A1134  
 IMPEDANCE: NON CONSTANT  
 VOLTAGE RATING: 400 VRMS  
 INSULATION RESISTANCE: 5,000 MEGOHMS  
 CONTACT RESISTANCE:  
 CENTER: 5.0 MILLOHMS MAX.  
 INTERMEDIATE: 0.5 MILLOHMS MAX.  
 OUTER: 0.5 MILLOHMS MAX.



NOTES: 1. ALL ITEMS SHIP LOOSE IN BAG

|            |                    |             |             |
|------------|--------------------|-------------|-------------|
|            |                    |             |             |
| B          | ECN 1064           | TLB         | 05/28/03    |
| A          | NO CHG - ECN 999   | TLB         | 02/23/03    |
| <b>REV</b> | <b>DESCRIPTION</b> | <b>APPR</b> | <b>DATE</b> |

**IntelliConnect**

**UNLESS OTHERWISE SPECIFIED**  
 ALL DIMENSIONS ARE REFERENCE  
 X.XXX DIM'S = INCHES \* [X.XX] DIM'S = MILLIMETERS  
 SURFACE FINISH: 63 MICRO MAX.  
 ALL DIAMETERS TO BE CONCENTRIC WITHIN .005 F.I.M.

**TITLE:** TRB STRAIGHT CABLE U/G CLAMP JACK

**MATERIAL & FINISH:** PER TABLE ABOVE

|   |   |   |
|---|---|---|
| <b>DRAWN BY:</b> TLB<br><b>DATE:</b> 12/13/00 | <b>CHECK BY:</b> PCS<br><b>DATE:</b> 12/13/00 | <b>APPR. BY:</b> SRS<br><b>DATE:</b> 12/13/00 |
| <b>CAGE CODE NO:</b> 5N5S5                    | <b>SCALE:</b> 6:1                             | <b>SIZE:</b> A                                |
| <b>SALES DRAWING</b>                          | <b>PART NO.</b><br>0131-J1NN-418-100N         | <b>SHEET</b><br>1 OF 1                        |