

MATERIAL/FINISH PROPERTIES

MATERIAL PROPERTIES:

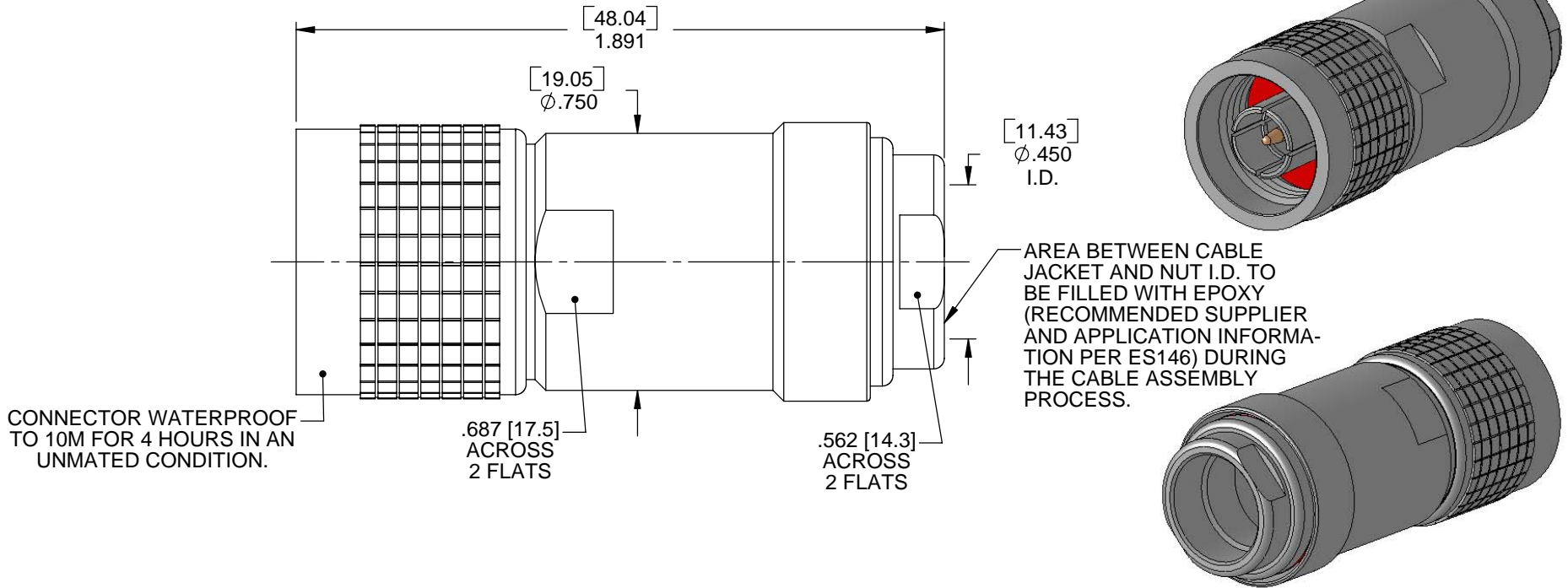
BODY: BRASS PER ASTM B16 OR EQUIVALENT
 INTERFACE CONTACT: BERYLLIUM COPPER PER ASTM B196 OR EQUIVALENT
 CABLE CONTACT: BRASS PER ASTM B16 OR EQUIVALENT
 INSULATORS: PTFE PER ASTM D1710 OR EQUIVALENT
 GASKETS: SILICONE RUBBER PER AA59588 OR EQUIVALENT

PLATING PROPERTIES:

BODY: .000100 MIN. NICKEL PER QQ-N-290
 CONTACT: .000030 MIN. GOLD PER MIL-G-45204 OVER
 .000050 MIN. NICKEL PER QQ-N-290

MECHANICAL/ELECTRICAL PROPERTIES

CONNECTOR MEETS: MIL-STD-348 FIG. 304-1, MIL-PRF-39012
 CONNECTOR MEETS: RoHS 2002/95/EC STANDARDS
 CONNECTOR DURABILITY: 500 CYCLES MIN.
 CABLE: RG9, 214 OR EQUIVALENT
 ASSEMBLY INSTRUCTIONS: AI426
 IMPEDANCE: 50 OHMS NOMINAL
 FREQUENCY RANGE: DC-12 GHz
 VOLTAGE RATING: 1,000 VRMS
 INSULATION RESISTANCE: 5,000 MEGOHMS
 DIELECTRIC WITHSTANDING VOLTAGE: 2,500 VRMS



IntelliConnect

TITLE: N-TYPE SEALED STRAIGHT CABLED WEDGE CLAMP PLUG

MATERIAL & FINISH: PER TABLE ABOVE

DRAWN BY: SRS	CHECK BY: PCS	APPR. BY: TLB
DATE: 07/27/12	DATE: 07/27/12	DATE: 07/27/12

CAGE CODE NO: 5N5S5	SCALE: 2.25:1	SIZE: A	REV: A
----------------------------	----------------------	----------------	---------------

SALES DRAWING	PART NO. 5125-P1NN-212-101N	SHEET 1 OF 1
----------------------	---------------------------------------	------------------------

UNLESS OTHERWISE SPECIFIED

ALL DIMENSIONS ARE REFERENCE
 X.XXX DIM'S = INCHES * [X.XX] DIM'S = MILLIMETERS
 SURFACE FINISH: 63 MICRO MAX.
 ALL DIAMETERS TO BE CONCENTRIC WITHIN .005 F.I.M.

A	NPR 845U	TLB	07/27/12
REV	DESCRIPTION	APPR	DATE