

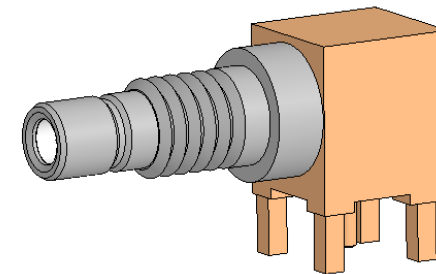
MECHANICAL/ELECTRICAL PROPERTIES

CONNECTOR MEETS: MIL-STD-348, FIG. 311-1, MIL-PRF-39012
 CONNECTOR MEETS: RoHS 2002/95/EC STANDARDS
 CONNECTOR DURABILITY: 500 CYCLES MIN.
 PANEL THICKNESS: .125 [3.2] MAX.
 BULKHEAD MOUNTING: PER ES117-BK050
 PCB MOUNTING: PER ES117-PC050
 IMPEDANCE: 50 OHMS (NOMINAL)
 FREQUENCY RANGE: DC-2 GHZ
 INSULATION RESISTANCE: 1,000 MEGOHMS
 VOLTAGE RATING: 335 VRMS

MATERIAL/FINISH PROPERTIES

MATERIAL PROPERTIES:
 BODIES: BRASS PER ASTM B16 OR EQUIVALENT
 CONTACT: BERYLLIUM COPPER PER ASTM B196 OR EQUIVALENT
 INSULATORS: PTFE PER ASTM D1710 OR EQUIVALENT

PLATING PROPERTIES:
 BODY 1: .000030 MIN. GOLD PER MIL-G-45204 OVER
 .000050 MIN. NICKEL PER QQ-N-290
 BODY 2: .000100 MIN. NICKEL PER QQ-N-290
 CONTACT: .000030 MIN. GOLD PER MIL-G-45204 OVER
 .000050 MIN. NICKEL PER QQ-N-290



IntelliConnect

UNLESS OTHERWISE SPECIFIED

ALL DIMENSIONS ARE REFERENCE
 X.XXX DIM'S = INCHES * [X.XX] DIM'S = MILLIMETERS
 SURFACE FINISH: 63 MICRO MAX.
 ALL DIAMETERS TO BE CONCENTRIC WITHIN .005 F.I.M.

TITLE: SMB RIGHT ANGLE PCM MOUNT JACK

MATERIAL & FINISH: PER TABLE ABOVE

DRAWN BY: TLB	CHECK BY: PCS	APPR. BY: SRS
DATE: 02/25/02	DATE: 02/25/02	DATE: 02/25/02
CAGE CODE NO: 5N5S5	SCALE: 4:1	SIZE: A
SALES DRAWING	PART NO. 5132-J2PC-000-100G	REV C
		SHEET 1 OF 1

C	ECN 1137	TLB	09/06/06
B	ECN 1020	SRS	02/25/02
A	NPR 134	SRS	01/23/01
REV	DESCRIPTION	APPR	DATE