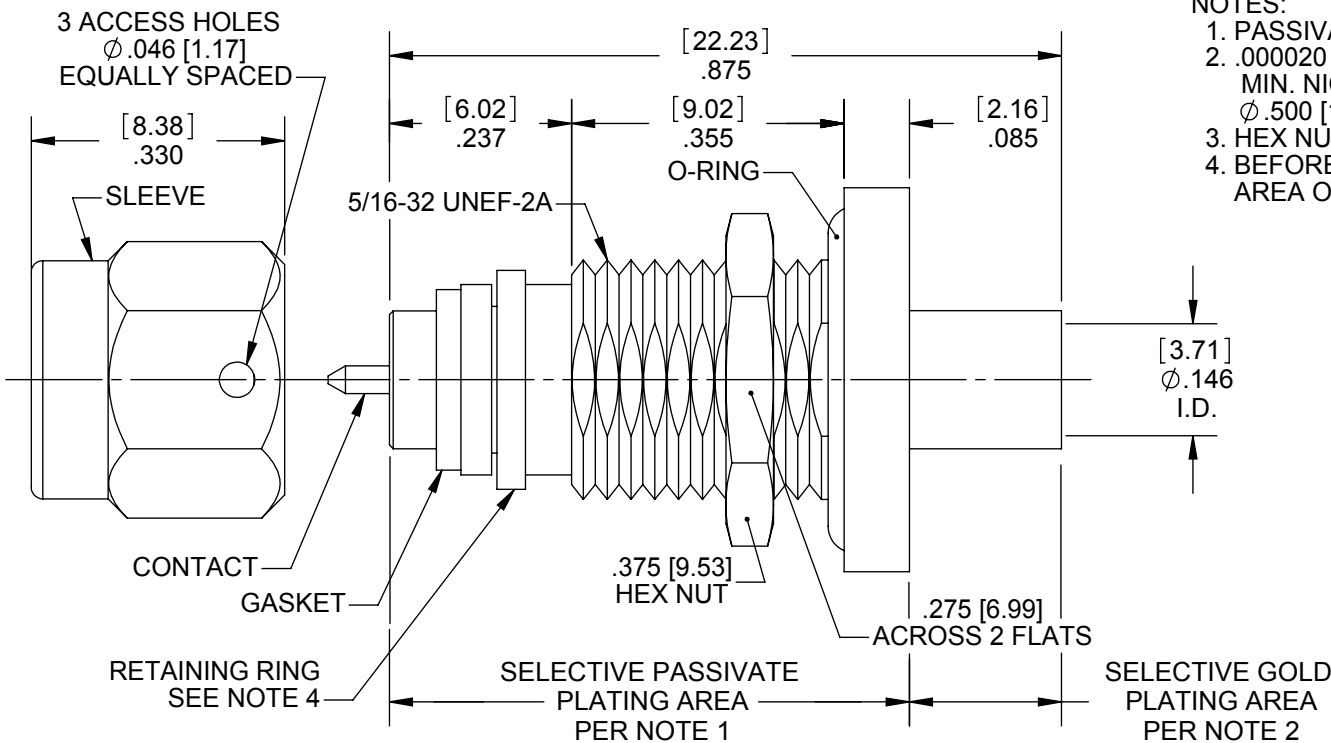


MATERIAL/FINISH PROPERTIES

MATERIAL PROPERTIES:
 BODY & SLEEVE: STAINLESS STEEL PER ASTM A582 OR EQUIVALENT
 CONTACT: BERYLLIUM COPPER PER ASTM B196 OR EQUIVALENT
 INSULATOR: PTFE PER ASTM D1710 OR EQUIVALENT
 HEX NUT: STAINLESS STEEL PER ASTM A582 OR EQUIVALENT
 GASKET: SILICONE RUBBER, GRADE 50-60 OR EQUIVALENT
 O-RING: FLUOROSILICONE PER MIL-R-25988 OR EQUIVALENT, COLOR: BLUE
PLATING PROPERTIES:
 BODY: SELECTIVE PLATING (SEE DETAILS BELOW)
 CONTACT: .000030 MIN. GOLD PER MIL-G-45204 OVER
 .000050 MIN. NICKEL PER QQ-N-290
 SLEEVE & HEX NUT: PASSIVATE PER QQ-P-35

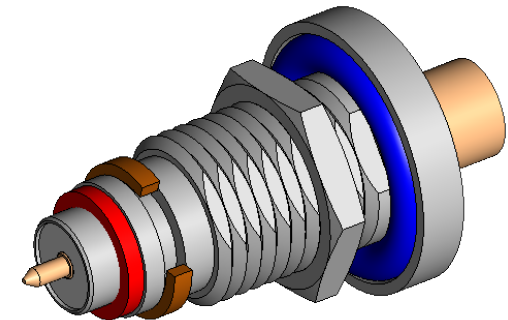
MECHANICAL/ELECTRICAL PROPERTIES

CONNECTOR MEETS: MIL-STD-348 FIG. 310-1, MIL-PRF-39012
 CONNECTOR MEETS: RoHS 2002/95/EC STANDARDS
 CONNECTOR DURABILITY: 500 CYCLES MIN.
 MOUNTING: PER ES117-BK450
 PANEL THICKNESS: .250 [6.4] MAX.
 CABLE: MICRO-COAX: UT141A-AL-TP-LL (.141 S/R SPECIAL)
 ASSEMBLY INSTRUCTIONS: A1131
 IMPEDANCE: 50 OHMS NOMINAL
 FREQUENCY RANGE: DC-18 GHz
 VOLTAGE RATING: 335 VRMS
 INSULATION RESISTANCE: 5,000 MEGOHMS



NOTES:

- PASSIVATE PER QQ-P-35.
- .000020 MIN. GOLD PER MIL-G-45204 OVER .000050 MIN. NICKEL PER QQ-N-290 WITHIN .020 [.51] OF $\phi .500$ [12.70] SHOULDER.
- HEX NUT & SLEEVE ARE PROVIDED UNASSEMBLED.
- BEFORE PLACING RING ON BODY, STAKE UNDERCUT AREA OF BODY PER ES106.



F	ECN 1523	MS	05/05/16
E	ECN 1367	TLB	05/30/12
D	ECN 1137	TLB	09/06/06
C	ECN 1096	TLB	10/21/04
B	ECN 1080	SRS	11/12/03
A	NPR 258	SRS	04/28/03
REV	DESCRIPTION	APPR	DATE

IntelliConnect

UNLESS OTHERWISE SPECIFIED
 ALL DIMENSIONS ARE REFERENCE
 X.XXX DIM'S = INCHES * [X.XX] DIM'S = MILLIMETERS
 SURFACE FINISH: 63 MICRO MAX.
 ALL DIAMETERS TO BE CONCENTRIC WITHIN .005 F.I.M.

TITLE: SMA "SPECIAL .141 S/R" CABLED BULKHEAD MOUNT PLUG

MATERIAL & FINISH: PER TABLE ABOVE

DRAWN BY: TLB	CHECK BY: PCS	APPR. BY: SRS
DATE: 03/07/03	DATE: 03/07/03	DATE: 03/07/03
CAGE CODE NO: 5N5S5	SCALE: 4:1	SIZE: A
SALES DRAWING	PART NO. 5139-P1BK-104-100G	SHEET 1 OF 1