

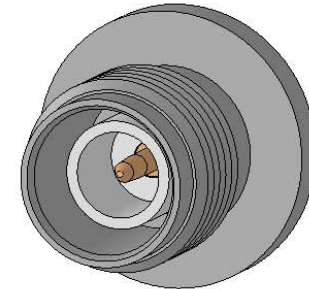
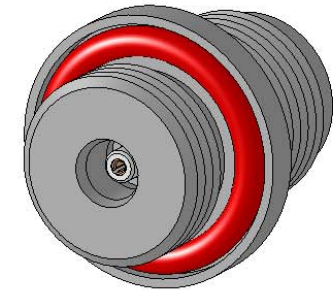
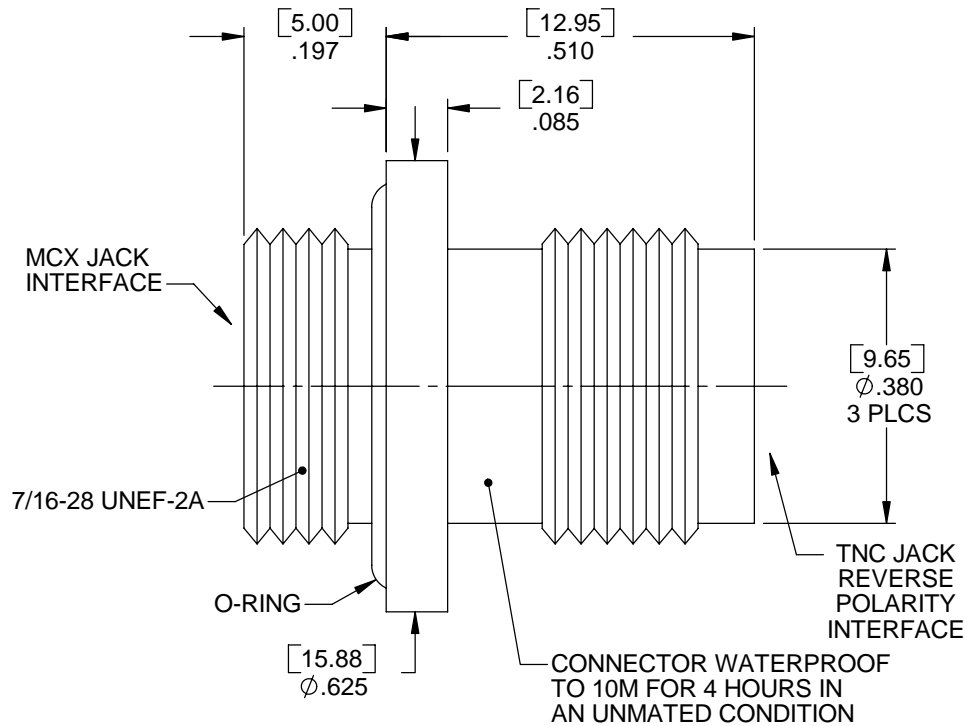
MATERIAL/FINISH PROPERTIES

MATERIAL PROPERTIES:
 BODY: BRASS PER ASTM B16 OR EQUIVALENT
 CONTACT: BERYLLIUM COPPER PER ASTM B196 OR EQUIVALENT
 INSULATOR: PTFE PER ASTM D1710 OR EQUIVALENT
 O-RINGS: SILICONE RUBBER PER ZZ-R-765 CLASS II-B OR EQUIVALENT

PLATING PROPERTIES:
 BODY: .000100 MIN. NICKEL PER QQ-N-290
 CONTACT: .000030 MIN. GOLD PER MIL-G-45204 OVER
 .000050 MIN. NICKEL PER QQ-N-290

MECHANICAL/ELECTRICAL PROPERTIES

CONNECTOR MEETS: CECC 22 220, MIL-PRF-39012, MIL-STD-348
 CONNECTOR MEETS: RoHS 2002/95/EC STANDARDS
 CONNECTOR DURABILITY (MCX): 500 CYCLES MIN.
 CONNECTOR DURABILITY (TNC): 500 CYCLES MIN.
 MOUNTING: PER ES117-BK600
 PANEL THICKNESS: .197 [5.0] MAX.
 IMPEDANCE: 50 OHMS NOMINAL
 FREQUENCY RANGE: DC-6 GHZ
 VOLTAGE RATING: 335 VRMS
 INSULATION RESISTANCE: 1,000 MEGOHMS
 DIELECTRIC WITHSTANDING VOLTAGE: 1,000 VRMS



IntelliConnect

TITLE: TNC REVERSE POLARITY JACK TO SPECIAL MCX JACK SEALED ADAPTER

MATERIAL & FINISH: PER TABLE ABOVE

| | | |
|-----------------------|-----------------------|-----------------------|
| DRAWN BY: TLB | CHECK BY: PCS | APPR. BY: SRS |
| DATE: 08/26/04 | DATE: 08/26/04 | DATE: 08/26/04 |

| | | | |
|----------------------------|-------------------|----------------|---------------|
| CAGE CODE NO: 5N5S5 | SCALE: 4:1 | SIZE: A | REV: B |
|----------------------------|-------------------|----------------|---------------|

| | | |
|----------------------|-----------------------------------|------------------------|
| SALES DRAWING | PART NO. A5722-1BK-101N | SHEET 1 OF 1 |
|----------------------|-----------------------------------|------------------------|

UNLESS OTHERWISE SPECIFIED

ALL DIMENSIONS ARE REFERENCE
 X.XXX DIM'S = INCHES * [X.XX] DIM'S = MILLIMETERS
 SURFACE FINISH: 63 MICRO MAX.
 ALL DIAMETERS TO BE CONCENTRIC WITHIN .005 F.I.M.

| | | | |
|------------|--------------------|-------------|-------------|
| | | | |
| B | ECN 1176 | TLB | 10/29/08 |
| A | ECN 1115 | SRS | 12/15/05 |
| REV | DESCRIPTION | APPR | DATE |